

# SUN MESSENGER

THURSDAY, JANUARY 14, 2010

FOR COMMUNITY NEWS ALL DAY, EVERY DAY

CLEVELAND.COM/SEN

## Two clubs to combine memberships

Oakwood, Mayfield Sand Ridge golf clubs will vacate 144 acres on SE-CH border

By Lindsay Betz  
lbetz@sunnews.com

**CLEVELAND HTS.** — When the Oakwood Club and The Mayfield Sand Ridge Club combine their memberships, they will leave a vacant 144-acre property here.

The two clubs will officially combine memberships April 1 and operate out of Mayfield Sand Ridge's South Euclid and Chardon properties.

Oakwood's property, which lies about 60 percent here and 40 percent in South Euclid, will be sold.

The property, 1516 Warrensville Center Road, runs along Warrensville between Mayfield and East Antisdale roads.

Stuart Kline, a longtime member of Oakwood, is part of a new three-person board responsible for the sale of the property.

He said the board is working on hiring the Cleveland office of a national real estate broker who will market and sell the property.

"We will work closely with the cities of

Cleveland Heights and South Euclid to come up with uses that are acceptable to everybody," he said.

Kline said despite rumors circulating, the board has had no serious discussions with any potential buyers.

The goal is to get the property on the market within 30 days, he said, although an asking price has not yet been set.

Mayor Ed Kelley said an ideal use for the land, which includes Oakwood's 55,000 square-foot clubhouse, would

See **CLUBS, A13**

## CLUBS

From A1

be a park or another golf course.

"I think this would be a good opportunity," he said. "This is probably the most desirable site for development in Cuyahoga County because of its size and location."

Kelley said the land is zoned for single-family use, but a developer could propose any type of development and ask for variances to make it comply with city code.

"The important thing is that we're at the very beginning stages of this," he said.

Tonya Strong-Charles, director of media relations at John Carroll University, said the university is not interested in purchasing the Oakwood property.

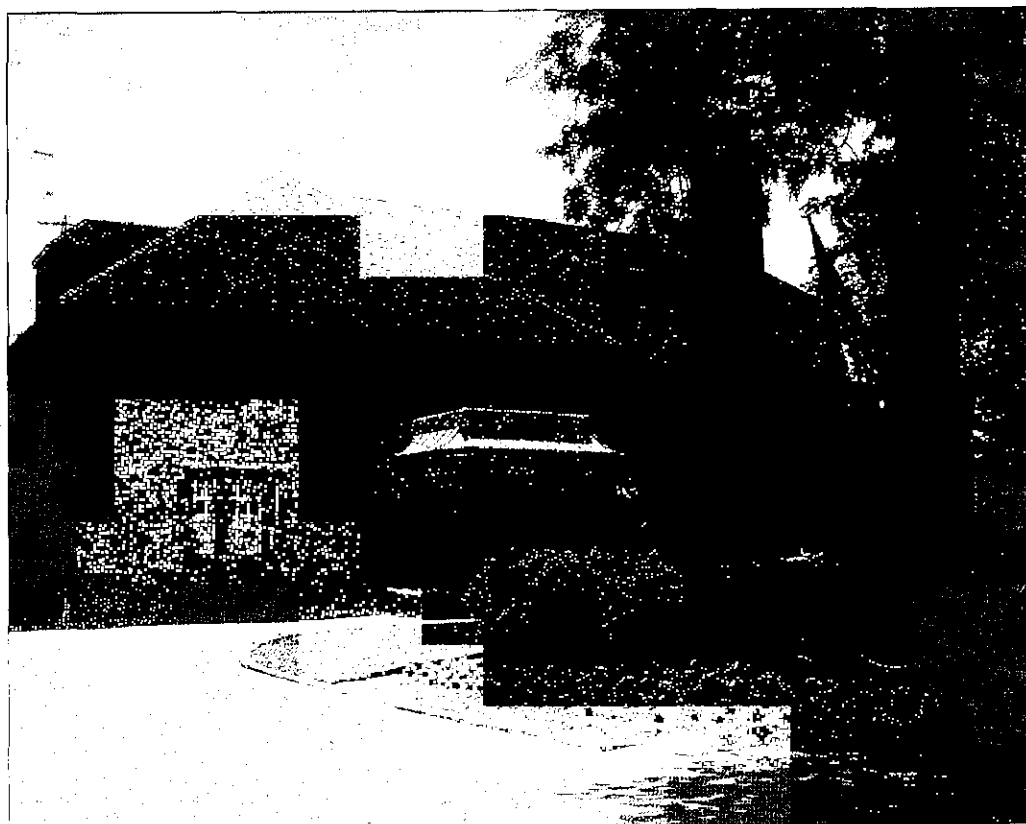
The combined entity, which will go by the Mayfield Sand Ridge Club name, will allow all Oakwood members to automatically become members if they choose.

Oakwood was founded in 1905 by prominent Jewish business and civic leaders in the community. It has long been committed to social, civic and charitable responsibility.

It will combine with Mayfield Sand Ridge, which was formed in 2006 with the combination of the Mayfield Country Club in South Euclid and the Sand Ridge Golf Club in Chardon.

Mayfield currently has 550 members. Oakwood has 350.

The combination of the two clubs is a result of several factors, including the economic



ERIN WEST/SPECIAL TO SUN NEWS

**Oakwood Club is combining memberships with Mayfield Sand Ridge Club. The 144-acre Oakwood property in Cleveland Heights and South Euclid, including the historic clubhouse, seen here, will be sold.**

downturn and shifting work and lifestyle demands of families.

Ned Welc, general manager of Mayfield Sand Ridge, said in a statement the combination is a perfect fit because of the similarities between the two clubs.

The new club will operate Oakwood's tennis facilities. When the Oakwood property is sold, proceeds from that sale will be used to build indoor tennis facilities at Mayfield's South Euclid campus.

Many employees from Oakwood have accepted employment at Mayfield Sand Ridge. The clubs will offer temporary benefits and outplace-

ment assistance for those who do not make the transition, according to the statement.

Many historical artifacts and memorabilia from Oakwood will be moved to Mayfield. The rest will be moved to the Maltz Museum of Jewish Heritage and the Western

Reserve Historical Society.

Mayfield Sand Ridge's locations are at 1545 Sheridan Road in South Euclid and 12150 Mayfield Road in Chardon.

For membership information, call Jeanne McMahon at (216) 381-0826 ext. 116.